

Encore FR Pro Color



Light Efficiency:

7 Lumen/Watt

Light Quality:

CRI: 91.6

Color Temperature:

6127 K

Output: 2798 lm

Peak: 119443 cd

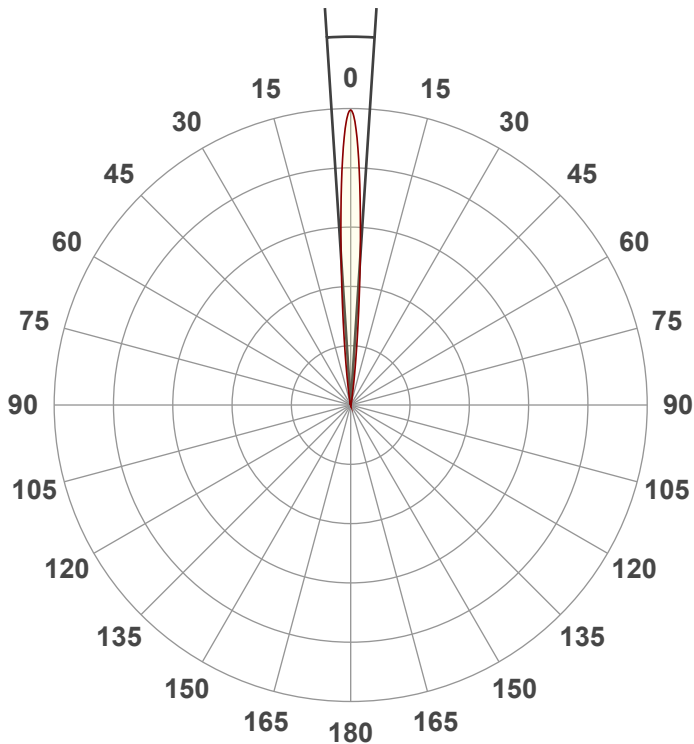
Power: 387 W

PF: 1.0



Beam Angle

7.4°



Test:

Zoom In Full On

Date:

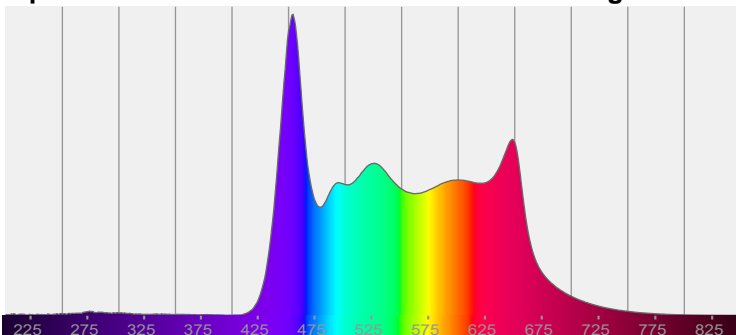
11/12/2021

Note:

CIE 1931
x: 0.321
y: 0.318

Spectra

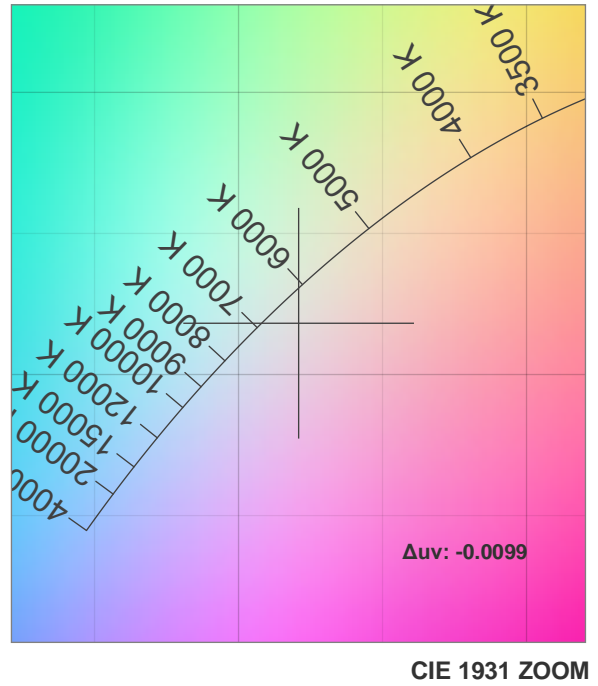
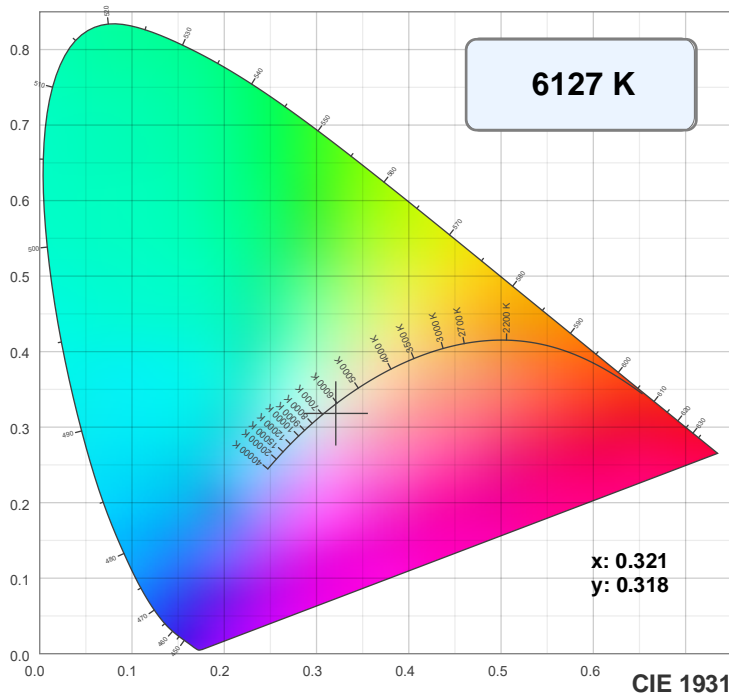
Dominant Wavelength: 829nm



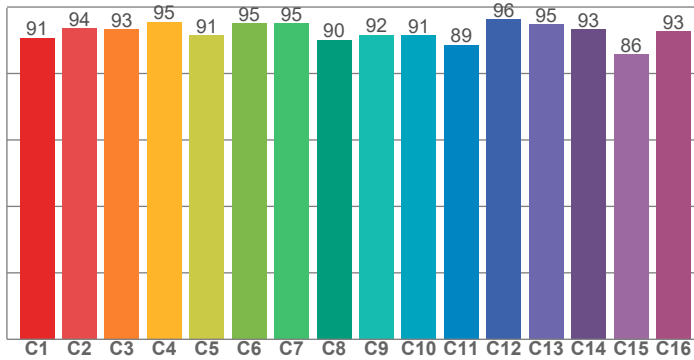
Power

Voltage: 115 V
Current: 3.35 A
Frequency: 0 Hz

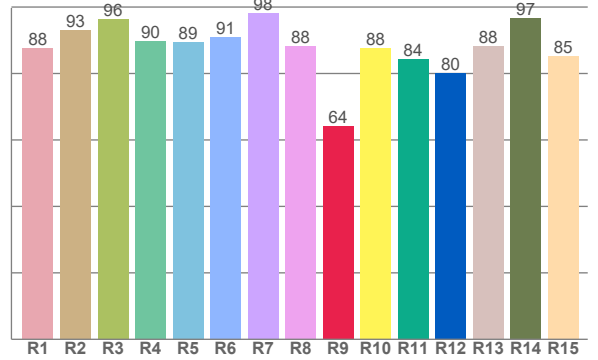
Color Details



TM30: 92.2



CRI: 91.6 (R1-R8)



CRI R values, only R1-R8 are used to calculate final CRI value

R1	R2	R3	R4	R5	R6	R7	R8	R9	R10	R11	R12	R13	R14	R15
87.6	92.9	96.3	89.7	89.5	90.9	98.0	88.2	64.1	87.6	84.4	80.2	88.2	96.6	85.3

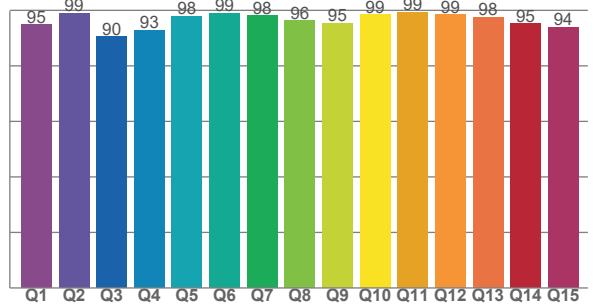
TM30 C values, 16 binned values out of total of 99 C values

C1	C2	C3	C4	C5	C6	C7	C8	C9	C10	C11	C12	C13	C14	C15	C16
90.6	93.6	93.3	95.5	91.5	95.0	95.0	90.1	91.6	91.4	88.6	96.2	94.8	93.2	85.8	92.7

CQS Q values

Q1	Q2	Q3	Q4	Q5	Q6	Q7	Q8	Q9	Q10	Q11	Q12	Q13	Q14	Q15
94.9	99.0	90.5	92.9	97.9	99.0	98.1	96.4	95.4	98.5	99.3	98.5	97.6	95.3	94.0

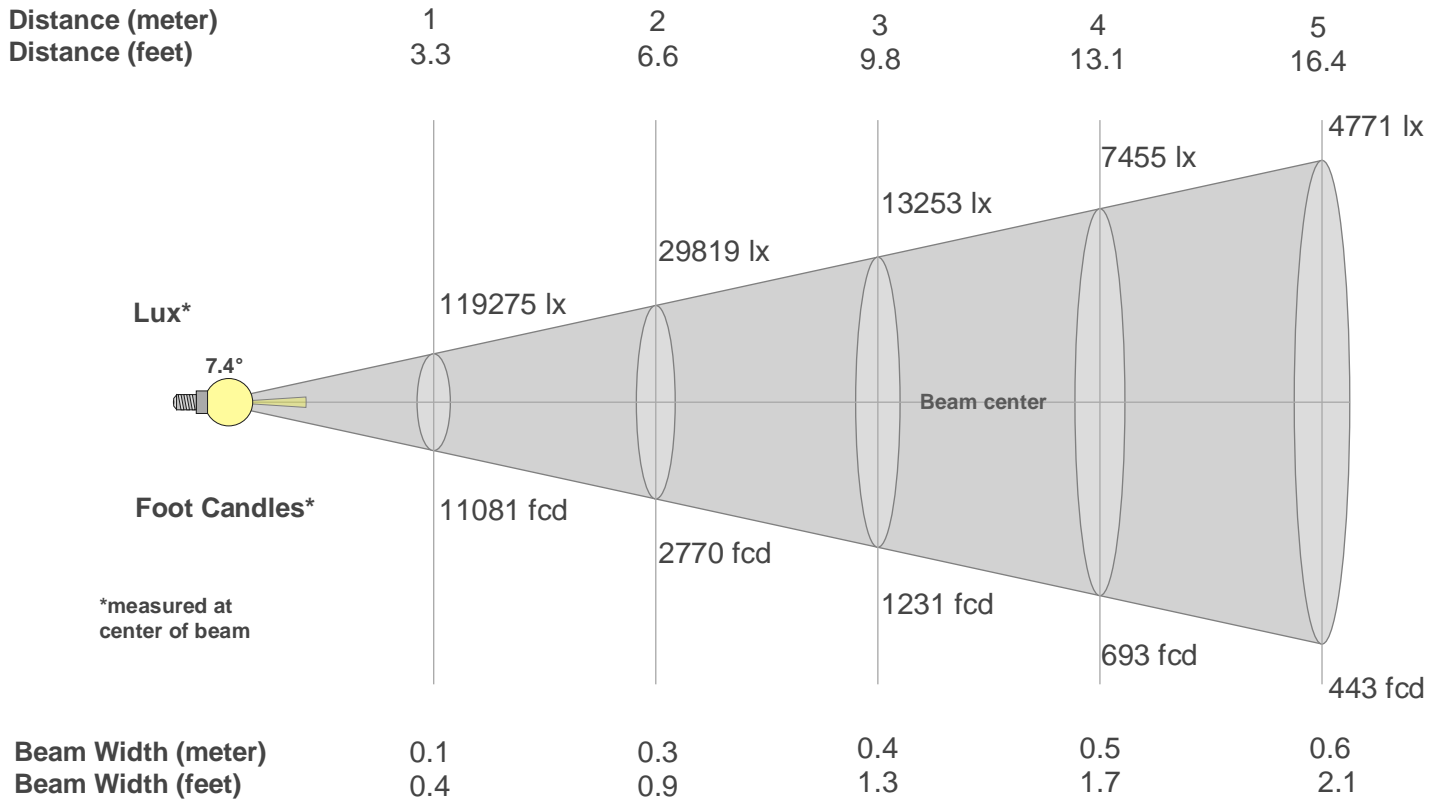
CQS: 95.7



Color Parameters

Color Temperature	Color Rendering Index	Red Component	Color Fidelity	Color Gamut	Color Quality Scale	Color Coordinate CIE 1931	Color Coordinate CIE 1931	Color Coordinate	Color Coordinate	Color Deviation from Black Body
CCT	CRI	CRI R9	TM30 Rf	TM30 Rg	CQS	x	y	u	v	Δuv
6127 K	91.6	64.1	92.2	104.3	95.7	0.321	0.318	0.208	0.309	-0.0099

Beam Details



Beam Intensities from 1-20m

m	1	2	3	4	5	6	7	8	9	10	11	12	13	14	15	16	17	18	19	20
ft	3.3	6.6	9.8	13.1	16.4	19.7	23	26.2	29.5	32.8	36.1	39.4	42.7	45.9	49.2	52.5	55.8	59.1	62.3	65.6
lx	11927 5	29819	13253	7455	4771	3313	2434	1864	1473	1193	986	828	706	609	530	466	413	368	330	298
fcd	11081	2770.3	1231.2	692.6	443.2	307.8	226.1	173.1	136.8	110.8	91.6	77	65.6	56.5	49.2	43.3	38.3	34.2	30.7	27.7

Intensities in 0° C-plane

0°	1°	2°	3°	4°	5°	6°	7°	8°	9°	10°	11°	12°	13°	14°	15°	16°	17°	18°	19°
119K	114K	98K	76K	54K	36K	22K	14K	8K	5K	3K	2K	2K	1K	1K	1K	1K	1K	0K	0K
100%	95%	82%	63%	45%	30%	19%	11%	7%	4%	3%	2%	1%	1%	1%	1%	1%	1%	0%	0%

Intensities in 90° C-plane

0°	1°	2°	3°	4°	5°	6°	7°	8°	9°	10°	11°	12°	13°	14°	15°	16°	17°	18°	19°
119K	114K	98K	76K	54K	36K	22K	14K	8K	5K	3K	2K	2K	1K	1K	1K	1K	1K	0K	0K
100%	95%	82%	63%	45%	30%	19%	11%	7%	4%	3%	2%	1%	1%	1%	1%	1%	1%	0%	0%

Intensities in 180° C-plane

0°	1°	2°	3°	4°	5°	6°	7°	8°	9°	10°	11°	12°	13°	14°	15°	16°	17°	18°	19°
119K	113K	97K	75K	54K	36K	22K	14K	9K	5K	4K	2K	2K	1K	1K	1K	1K	1K	1K	0K
100%	95%	81%	63%	45%	30%	19%	12%	7%	5%	3%	2%	2%	1%	1%	1%	1%	1%	1%	0%

Intensities in 270° C-plane

0°	1°	2°	3°	4°	5°	6°	7°	8°	9°	10°	11°	12°	13°	14°	15°	16°	17°	18°	19°
119K	113K	97K	75K	54K	36K	22K	14K	9K	5K	4K	2K	2K	1K	1K	1K	1K	1K	1K	0K
100%	95%	81%	63%	45%	30%	19%	12%	7%	5%	3%	2%	2%	1%	1%	1%	1%	1%	1%	0%

Beam Angle 50%	Field Angle 10%	Cutoff Angle 2,5%	Intensity Ratio in 120° Cone	Intensity Ratio in 90° Cone
7.4°	14.5°	20.8°	100.0%	100.0%